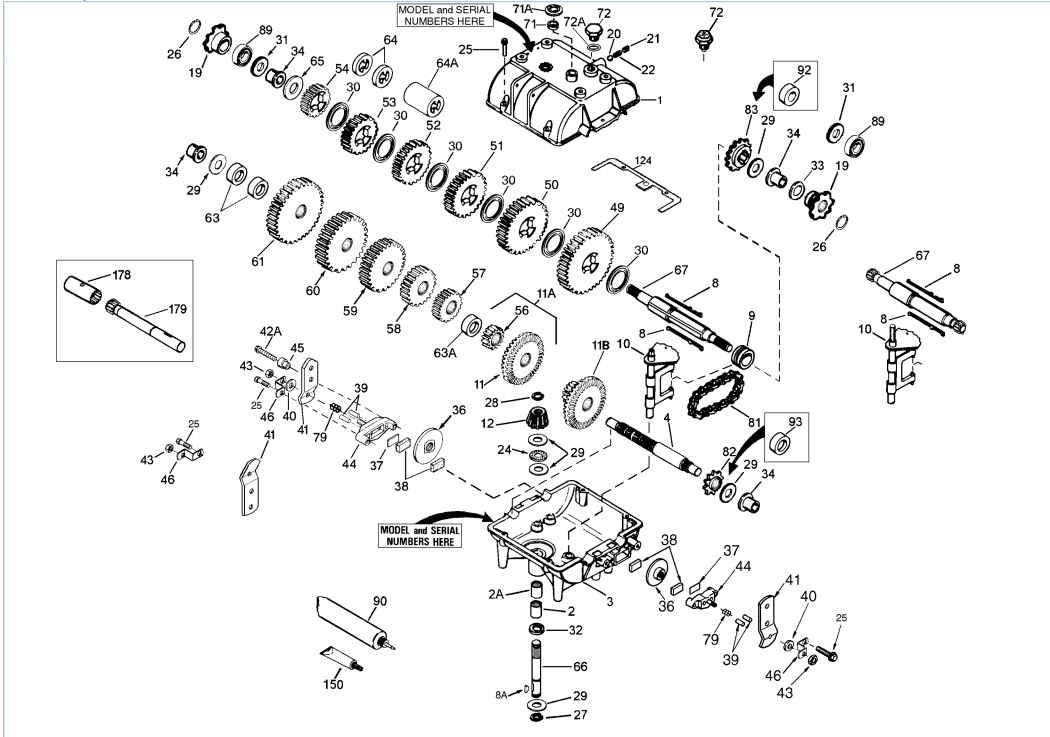


p700000.2 700-700-057A / Transmission



## Part List

p700000.2 700-700-057A / Transmission

REF #	ITEM #	DESCRIPTION	QTY	REMARK
1	772083A	Transmission Cover		
2	780086A	Needle Bearing		
2A	780086A	Needle Bearing		
3	770061A	Transmission Case		
4	776134	Countershaft		
8	792089A	Shifter Key		
8A	792192	Woodruff Key #4		
9	784266	Shift Collar		
10	784267	Shift Rod & Fork		
11	778137A	Bevel Gear (42 teeth)		
12	778153	Input Bevel Pinion (steel)		
19	786047	Sprocket (8 teeth)		
20	792077A	Steel Ball, 5/16" dia.		
21	792078	Set Screw, 3/8-16 x 3/8"		
22	792079	Spring		
25	792073A	Screw, 1/4-20 x 1-1/4"		
25	792073A	Screw, 1/4-20 x 1-1/4"		
26	792072	Retaining Ring		
27	792035	Retaining Ring		
28	788040	Retaining Ring		
29	780072	Thrust Washer		
30	780108	Thrust Washer		
30A	780108	Thrust Washer		
32	792001	"O" Ring		
34	780105A	Flanged Bushing		
36	790003	Brake Disk		
37	790007	Brake Pad Plate		
38	799021	Brake Pad (pkg of 2)		
39	786026	Dowel Pin		
40	792076A	Flat Washer, 5/16"		
41	790036	Brake Lever		
42A	792085A	Screw, 1/4-20 x 2-1/4"		
43	792075	Lock Nut, 5/16-24		
44	790025	Brake Pad Holder		
45	786067	Spacer		
46	786086	Brake Lever Bracket		
49	778125	Spur Gear (35 teeth)		
50	778124A	Spur Gear (30 teeth)		
51	778123A	Spur Gear (25 teeth)		
52	778122A	Spur Gear (22 teeth)		
53	778121A	Spur Gear (20 teeth)		
56	778136	Spur Gear (15 teeth-steel)		
57	778126A	Spur Gear (20 teeth)		
58	778127A	Spur Gear (25 teeth)		
59	778128A	Spur Gear (28 teeth)		
60	778129A	Spur Gear (30 teeth)		
65	780109	Thrust Washer (flat)		
66	776140	Input Shaft (3.825" long)		
67	776217	Brake Shaft (8-13/16" long)		
71	788069	Square Cut Seal		
72B	786193	Safety Switch		
81	786081	Roller Chain (No. 41 chain, 24 links)		
82	786082	Sprocket (9 teeth)		
83	786083	Sprocket (18 teeth)		
90	788067B	Grease		32 oz. bottle Bentonite grease
150	788093A	Liquid Gasket RTV Silicone		

## Part List

*Tecumseh-Head 700-700-057A / Complete Replacement.*

---

<b>REF #</b>	<b>ITEM #</b>	<b>DESCRIPTION</b>	<b>QTY</b>	<b>REMARK</b>
1	794568A	Complete Replacement - Transmission	1	